

**IMPORTANT:**  
These shop drawings are our interpretation of the contract documents. It shall be the responsibility of the General Contractor (or Construction Manager) to review these drawings for compliance with the design intent and Contract Documents. When these drawings are returned with "Approved" or "Approved As Noted" or "Reviewed" stamped on them, it shall constitute the General Contractor's (or Construction Manager's) and Architects agreement that the shop drawings do comply with the design intent and the contract documents.

**DO NOT SCALE PLANS:**  
Copying, Printing, Software and other processes required to produce these prints can stretch or shrink the actual paper or layout. Therefore, scaling of this drawing may be inaccurate. Contact the Glazing Contractor for any additional dimensions or clarifications.

DRAWINGS PREPARED BY:



Charrette Studios, Inc.  
23581 Donaldson St.  
Clinton Township, MI. 48035  
(586) 790-4329  
(586) 790-4346 (fx)

Revision or Issue:		
No.	Date	Subject
1	01-14-11	First Submittal

PROJECT NAME AND LOCATION:

**EUCLID TECH CENTER**  
6700 Euclid Avenue  
Cleveland, Ohio 44103

Storefront & Curtain Wall  
Shop Drawings

ARCHITECT:

**GEIS COMPANIES**  
10020 AURORA HUDSON ROAD  
STREETSBORO, OHIO 44241  
PH: 330-528-3500 | FAX: 330-528-0008

GENERAL CONTRACTOR:

**GEIS COMPANIES**  
10020 AURORA HUDSON ROAD  
STREETSBORO, OHIO 44241  
PH: 330-528-3500 | FAX: 330-528-0008

SEAL:

DRAWING TITLE:

**DETAILS**

SCALE: FULL

CSI PROJECT NO: 01031020

PROJECT MANAGER: T. MANSELL

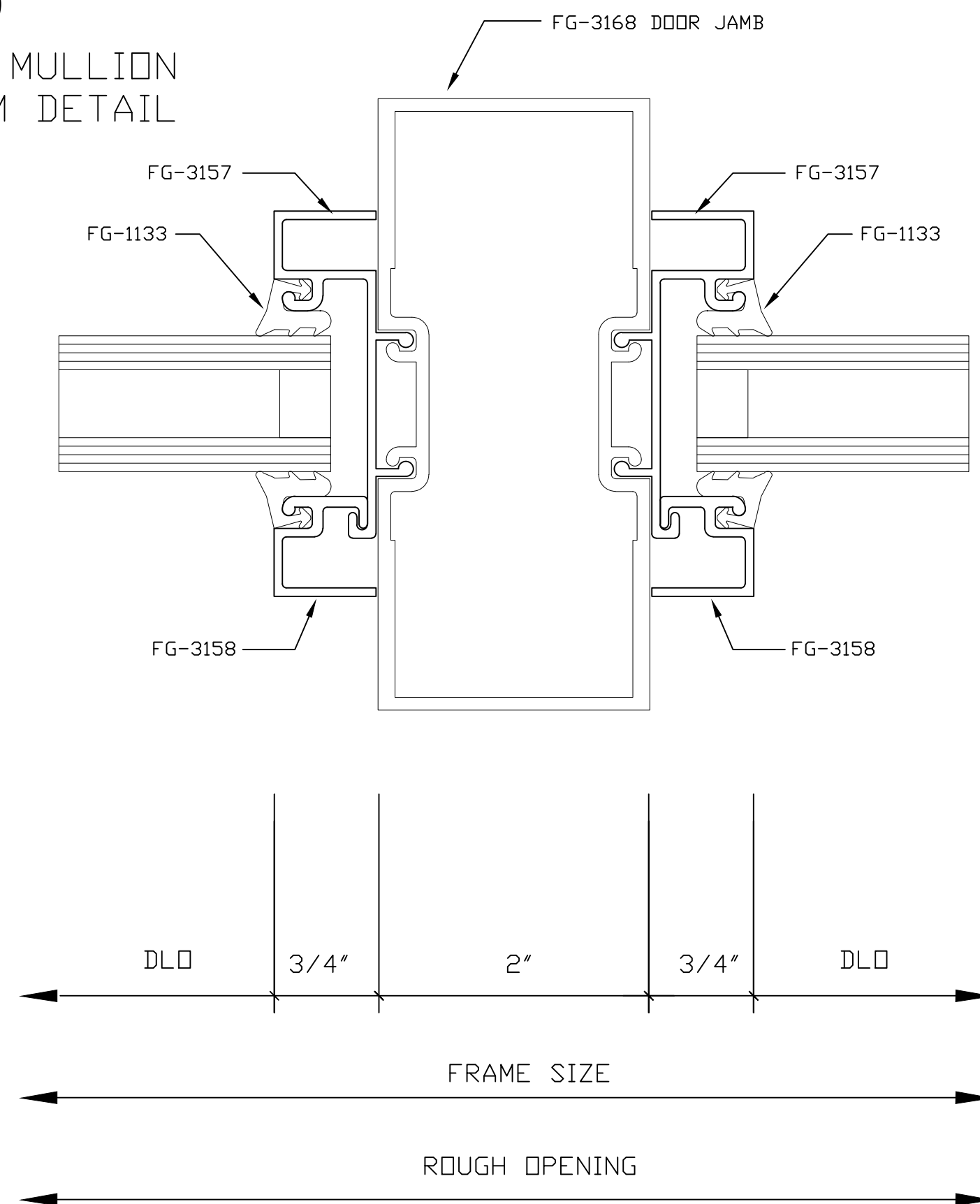
DRAWN BY: MJC

DATE: 01-14-11

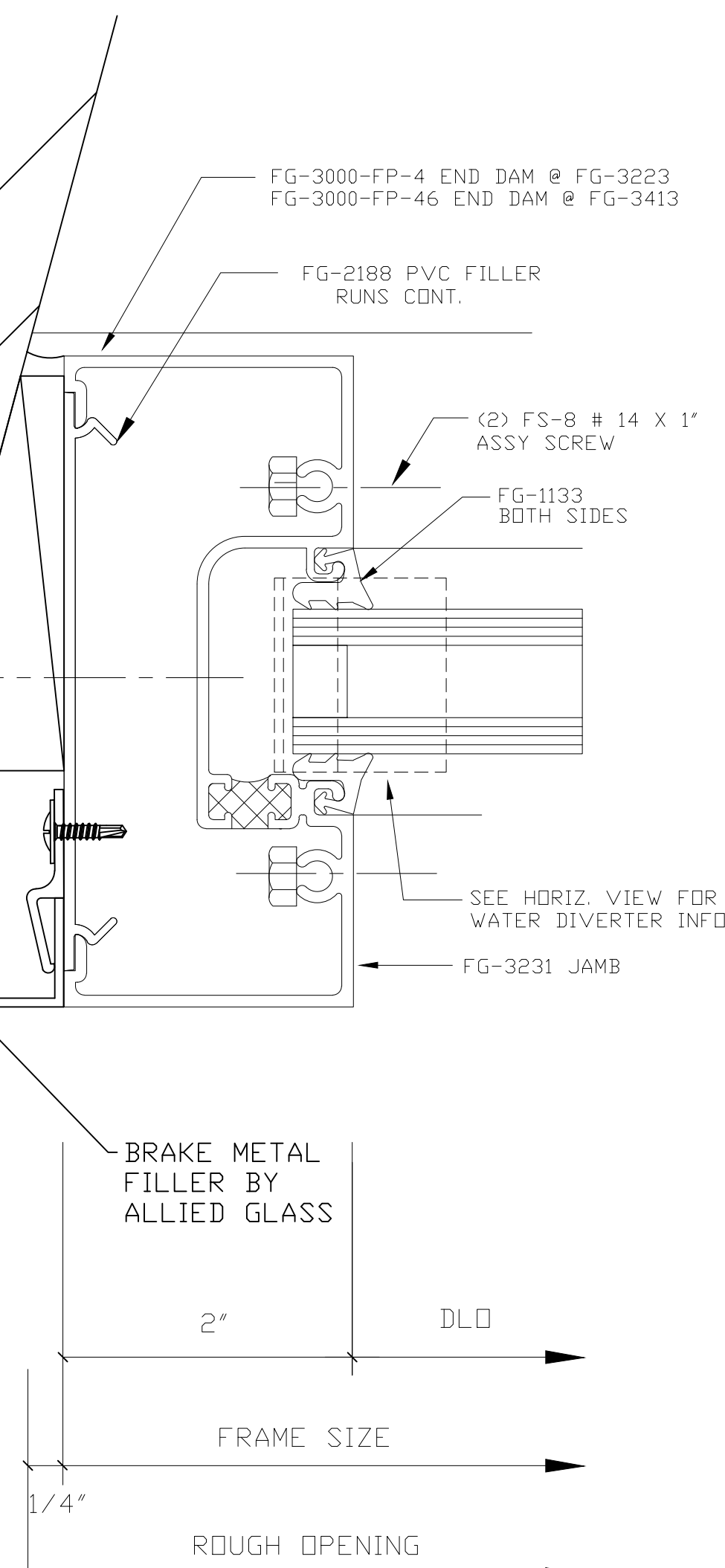
DRAWING NO:

**D4**

18  
DOOR JAMB MULLION  
AT TRANSOM DETAIL



20  
JAMB DETAIL  
REF: 9 / 4.5



FOR CLEARANCE OVER SHEAR BLOCK:  
WHEN ABOVE EYE LEVEL NOTCH TOP OF  
LAST INTERMEDIATE HORIZONTAL ON BOTH ENDS.  
WHEN BELOW EYE LEVEL NOTCH BOTTOM OF  
LAST INTERMEDIATE HORIZONTAL ON BOTH ENDS  
(TUBULAR INTERMEDIATE HORIZONTALS ONLY)

SEE HORIZONTAL VIEW FOR  
SHEAR BLOCK INFORMATION

SEALANT TAPE 1/4" X 3/8" PVC FOAM  
BUTT & SEAL CORNERS (CW-1636)

SQUARE BUTT ENDS CW-17 GASKET  
WITH SHOP INSTALLED CW-3 PRESSURE PLATE  
ATTACH WITH FS-322 CW-6 ISOLATOR. FIELD  
@ 12" D.C. #12-14 X 1" HWH \*TEK\*

PRESSURE TREATED WOOD  
BLOCKING BY OTHERS

CW-1195 POCKET FILLER  
ATTACH WITH FS-322  
#12-14 X 1" HWH \*TEK\*  
@ 18" D.C. (CAP SEALED)  
SEAL CONT.

CW-187  
SPACER

CW-2 FACE CAP

STONE VENEER  
BY OTHERS

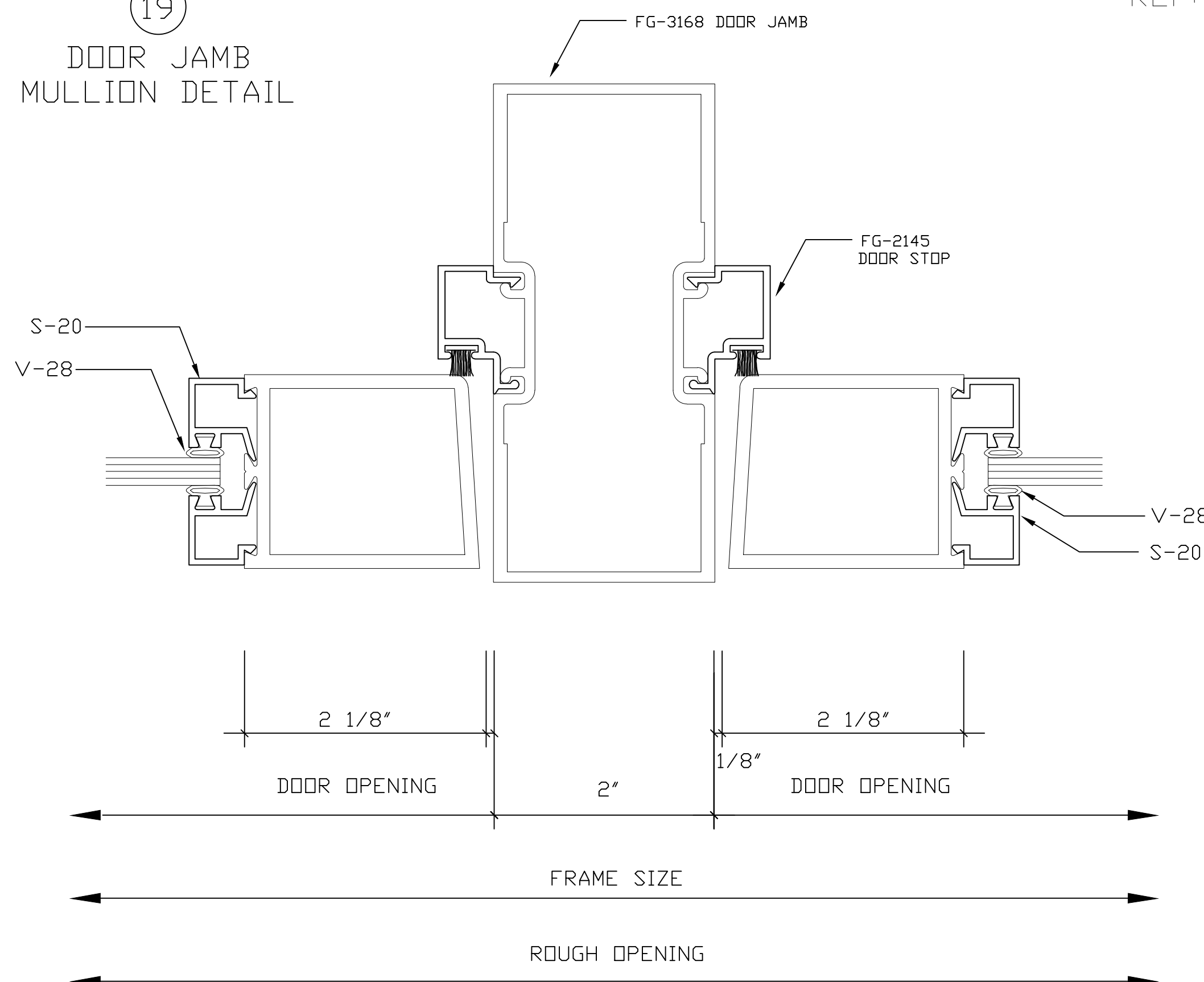
DLO 2 1/2"

FRAME SIZE

ROUGH OPENING 1/2"

21  
JAMB DETAIL  
REF: 11 / 4.5 (SIM.)

19  
DOOR JAMB  
MULLION DETAIL



FOR CLEARANCE OVER SHEAR BLOCK:  
WHEN ABOVE EYE LEVEL NOTCH TOP OF  
LAST INTERMEDIATE HORIZONTAL ON BOTH ENDS.  
WHEN BELOW EYE LEVEL NOTCH BOTTOM OF  
LAST INTERMEDIATE HORIZONTAL ON BOTH ENDS  
(TUBULAR INTERMEDIATE HORIZONTALS ONLY)

SEE HORIZONTAL VIEW FOR  
SHEAR BLOCK INFORMATION

SEALANT TAPE 1/4" X 3/8" PVC FOAM  
BUTT & SEAL CORNERS (CW-1636)

SQUARE BUTT ENDS CW-17 GASKET  
WITH SHOP INSTALLED CW-3 PRESSURE PLATE  
ATTACH WITH FS-322 CW-6 ISOLATOR. FIELD  
@ 12" D.C. #12-14 X 1" HWH \*TEK\*

STEEL TUBE  
BY OTHERS

BRAKE METAL ASSEMBLY  
AT STEEL TUBE OCCURS  
AT CW2 LOCATIONS ONLY  
BY ALLIED GLASS

BRAKE METAL  
CORNER BY  
ALLIED GLASS

BRAKE METAL CLOSURE  
ATTACHED TO  
MULLION AT CW1  
BY ALLIED GLASS

CW-1195 POCKET FILLER  
ATTACH WITH FS-322  
#12-14 X 1" HWH \*TEK\*  
@ 18" D.C. (CAP SEALED)  
SEAL CONT.

CW-187  
SPACER

CW-2 FACE CAP

CW-2 FACE CAP

22  
CORNER DETAIL  
REF: 1 / 4.4  
REF: 1 / 4.3 (SIM.)

146°